

# Cervix-Brúm™

A Better Option in Cell  
Collection for Cervical Cytology

*The most female  
friendly and effective  
cervix sampling  
device for simultaneous  
cell collection  
from both the  
ectocervical and  
endocervical regions.*



## Advantages of using the Cervix-Brúm

- A single sampling device for simultaneous collection of both the ectocervical and endocervical cells (instead of the routine Vaginal-Cervical-Endocervical collection method, where two sampling devices are needed; a wooden / plastic spatula for sampling of the ectocervix, follow by an endocervical brush for sampling of the endocervix).
- Greatly reduces patient discomfort and avoids bleeding as usually associated with rigid spatulas and rigid endocervical sampling devices.
- For use with both the conventional Pap Smear and liquid cytology.

FJORD

*Sophisticated, Standardized Technology*

# Cervix-Brúm™ Quick Reference Guide For Optimal Cell Collection

- 1 Contact the cervix with the Cervix-Brúm and insert the central bristles into the cervical canal deep enough to allow the shorter bristles to fully contact the ectocervix. While maintaining pressure in the direction of the cervix, gently rotate the Cervix-Brúm 5 times in a clockwise direction by rolling the stem between the thumb and the forefinger.

## Choose the preferred method

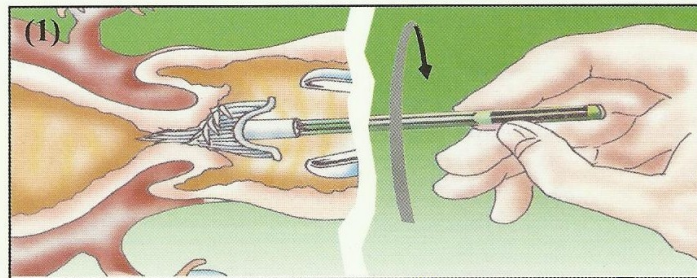
### (A) Conventional Pap Smear

- 2A Transfer the cells collected to the glass slide with a painting action, applying first one side of the bristles and then the other side.
- 3A Immediately apply fixative to the slide and label. Place the slide in the slidemailer.

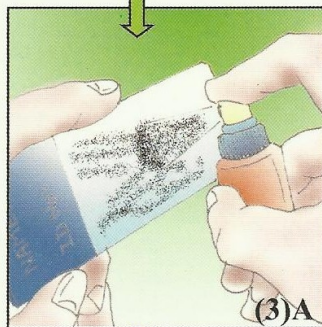
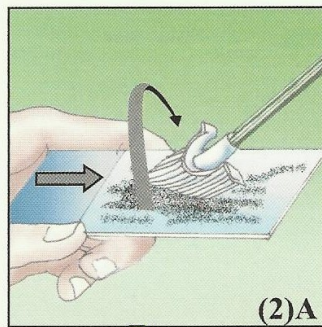
### (B) Liquid Cytology

- 2B Insert the Cervix-Brúm into the vial with the preservative solution and follow the instructions as given by the Liquid Cytology manufacturer.
- 3B Reseal and label the vial.

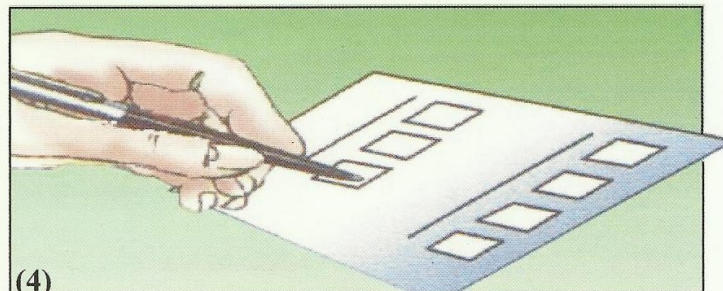
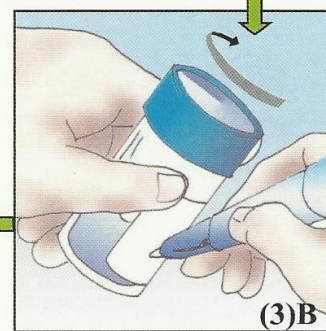
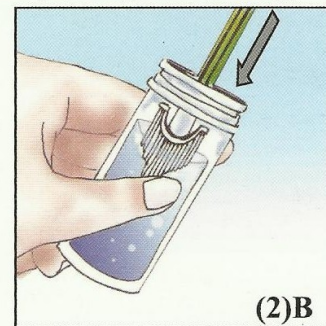
- 4 Complete the patient requisition form and send together with the slidemailer or vial to the laboratory.



(A) Conventional Pap Smear



(B) Liquid Cytology



*Note : Dispose of the Cervix-Brúm in accordance with the local Medical Hazardous Waste practice.*